

## DocTabs for Bricscad.

DocTabs is a plug-in application for Bricscad that provides an easy method for switching between documents. Each open drawing in a Bricscad session will have its own tab, by clicking a tab, that drawing becomes the active drawing in the Bricscad editor. The order of the tabs can be changed by simply dragging the tabs to the desired position. Double clicking on a tab will close the document and double clicking on the control bar where no tab exists will open a new document



Right clicking on a tab will bring up a menu, many of the menu items will be familiar (see next picture)

**Close**, will close the document, prompting to save if needed.

**Close Left Tabs**, will close all the tabs to the left, again prompting to save if needed.

**Close Right Tabs**, close the tabs to the right.

**Close ALL But This**, will close all the documents except for the one that's active

**Open**, **New**, **Save** and **Save as** have the same functionality as the menu items in the Bricscad File menu respectively.

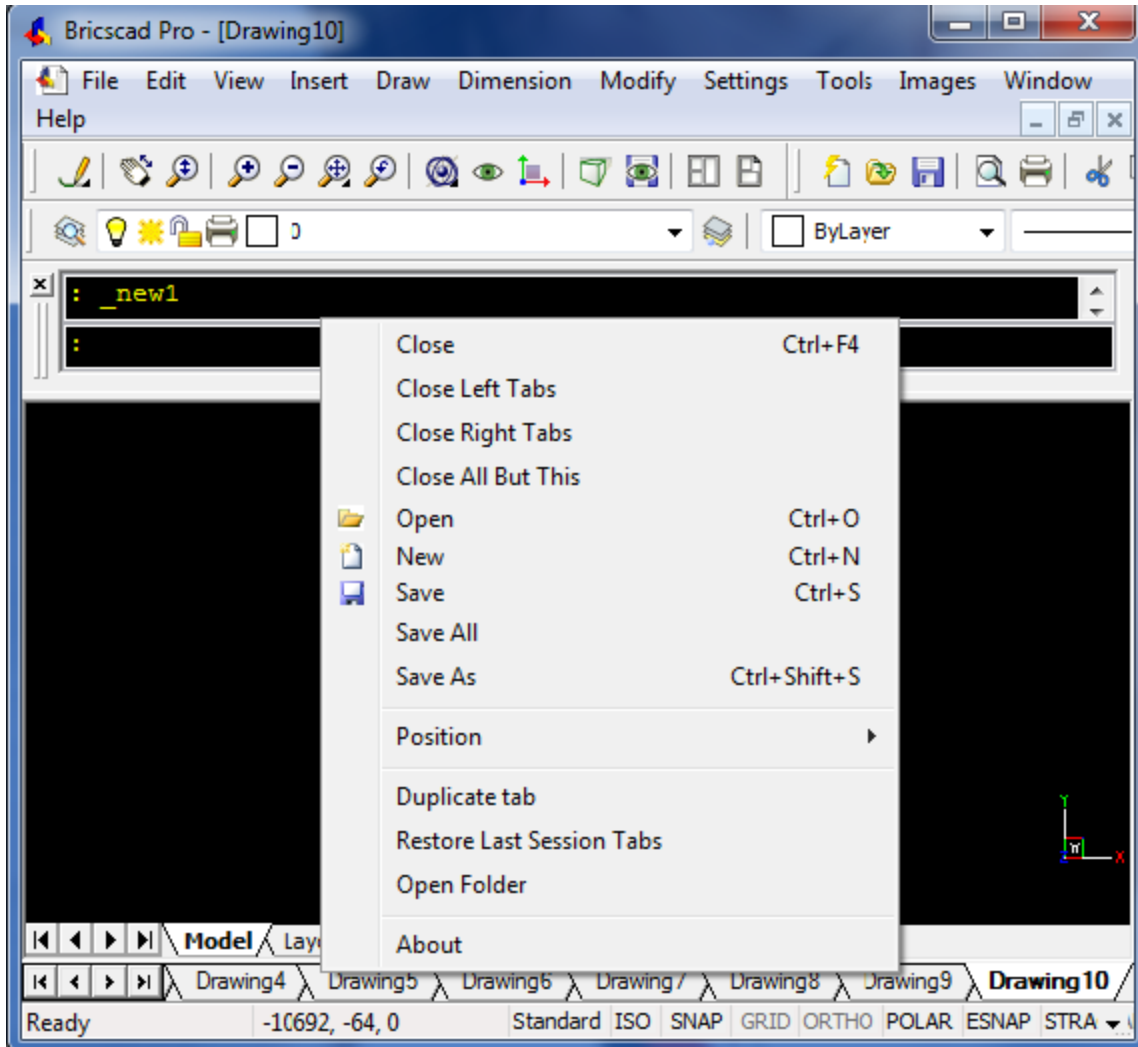
**SaveAll** , will attempt to save all the open drawing documents in the current session.

The **Position** menu allows you to place the DocTabs control bar on the Top, Bottom, Left or Right of the Bricscad drawing editor, you should choose the position that is most comfortable for you. Note: you must re-launch Bricscad for the changes to take effect.

The **Duplicate Tab** menu item will attempt to make a new copy of the active document, you will be prompted for a save name, similar to save as but without closing the original document.

**Restore Last Session Tabs** , Each time a Bricscad is closed DocTabs will save the state of the tabs, by choosing Restore Last Session Tabs from the menu, DocTabs will attempt to re-open the drawing document from the previous session.

**Open Folder**, this menu item will attempt to open the parent folder where the drawing is stored.



Note: The scroll tool will automatically be displayed when the number of tabs exceeds with width of Bricscad dialog frame.

System Requirements. DocTabs is compatible with Bricscad Standard & Pro v9.1.9 or newer